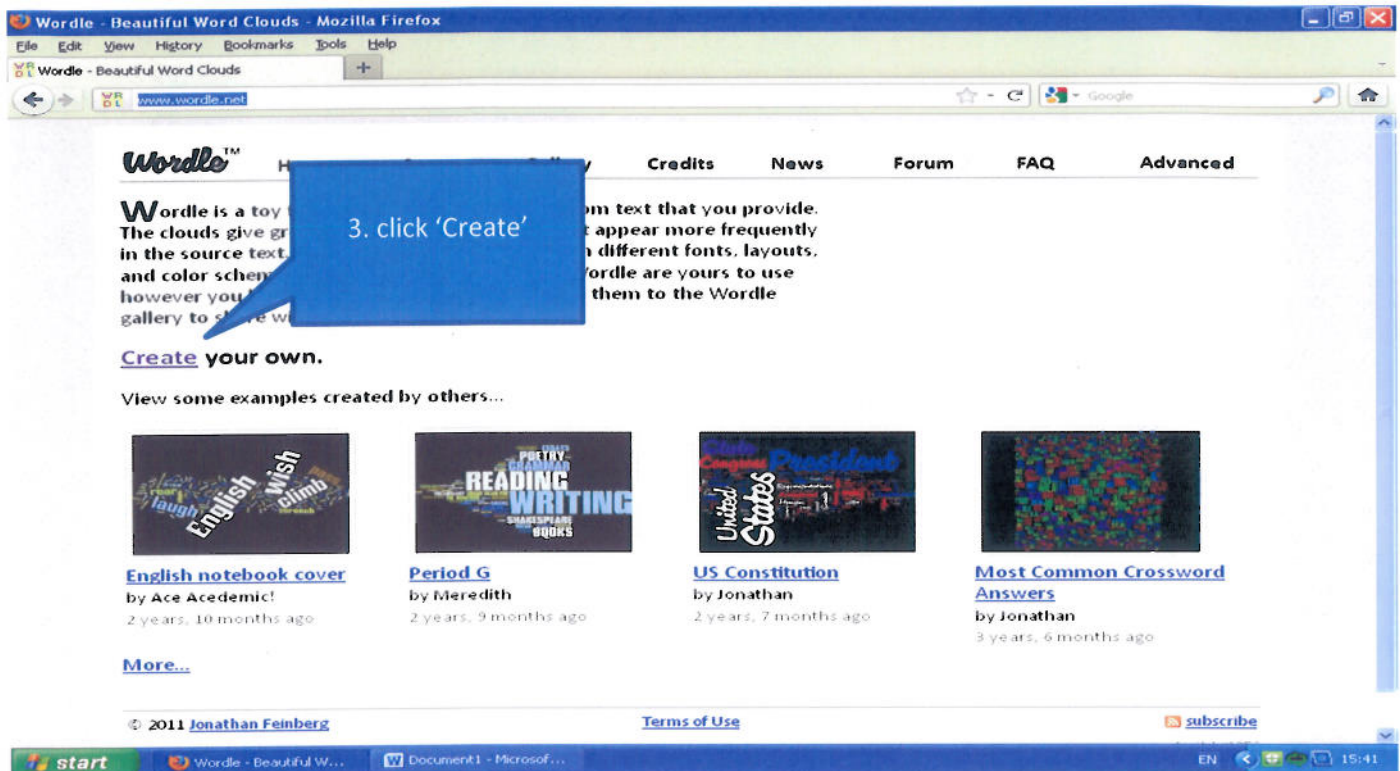


Helpsheet: How to use Wordle

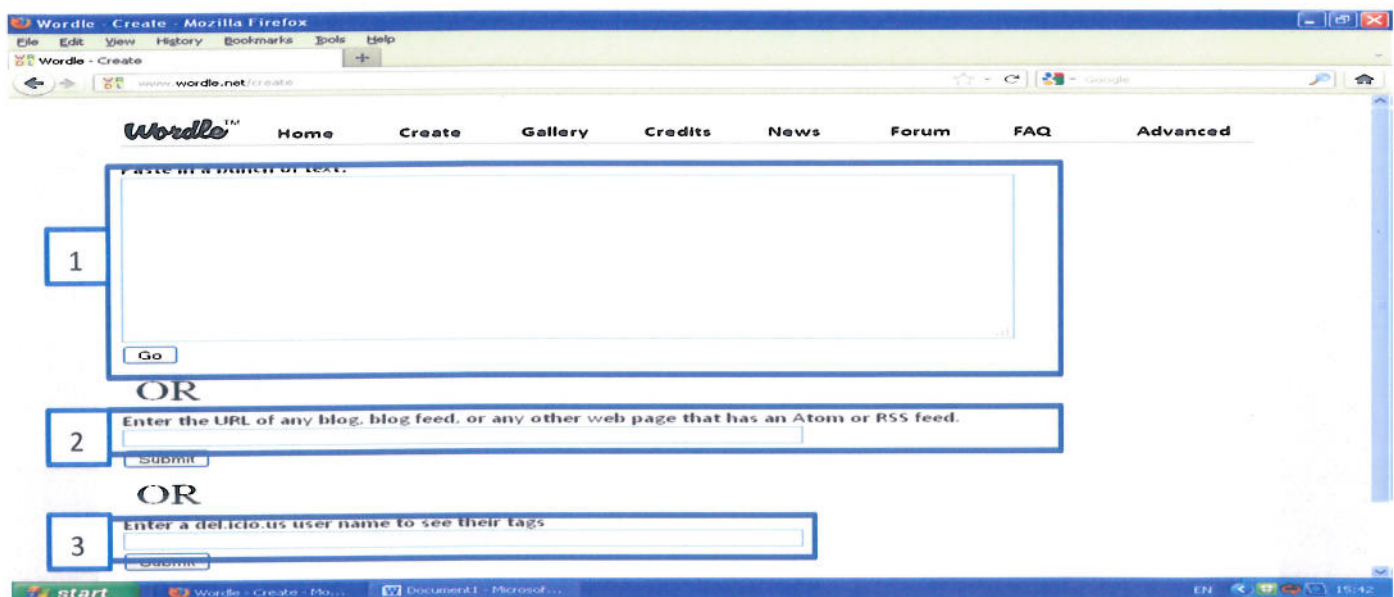
1. Log on to: <http://www.wordle.net/>

2. The following page will appear:



You have 3 options at how you get your text into a wordle format. These are:

- By typing or copying a piece of text (i.e. an exam board specification information on a specific unit of work, assessment criteria etc) – this is the recommended way as it is the easiest and least time consuming way of creating a wordle.
- Entering a URL of a webpage or blog you want to use
- Entering a del.icio.us username



4. Once you have entered your text (either by writing a paragraph yourself or copy and pasting from a document) into the first box, click 'Go'

